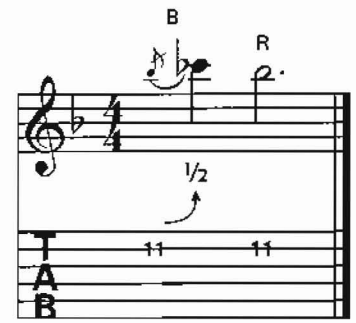


SONGSHEET #10

BENDING STRINGS

String bending is one of the expressive techniques used in playing the blues on the guitar. The idea is to *raise* the pitch of a note up a half step or a whole step by *pushing* or *bending* the string. Pluck the string, then immediately bend it (B), and then release (R) the string. In the example to the right, use the third finger to bend the string up a half step from B \flat to C \flat . In the F blues scale, the C \flat (enharmonically B) represents the flatted fifth (b5) of the scale.



Basic F Blues is based on **blues scale shape no. 4** (see *Improvisation Sheet #5*).

Basic F Blues

Moderately (swing 8ths) J.S.

F7 *8th pos.* **B \flat 7** **F7**

Solo

Count: 1 a - 2 an a 3 a - 4

5 **B \flat 7** *9th pos.* **F7** *8th pos.*

9 **C7** **B \flat 7** **F7**

CHORDS USED IN THIS SONG

In addition to the regular voicings, substitute some ninth chords, or try the following **comp** chords. Comp chords (from the word *accompaniment*) are chords that often omit the 5th and 6th strings. They are lighter and thinner sounding but quite adequate and hip when you are playing with a bass player.

regular voicings

comp chords

