

NOTESHEET #6

G MAJOR SCALE

The **G major scale** has an **F#** in the key signature. This means that you need to raise every F to **F#** no matter where it appears on the music staff. All major scales have the same interval construction. There are half steps between the 3rd and 4th tones and the 7th and 8th tones of the scale, fig. 1. The exercise below is a two-octave G major scale, fig. 2.

Use your little finger on the 4th fret, 4th string to play the **F#**. You need to favor the position of the fourth finger. It is shorter and can't stretch and reach sideways as easily as the index finger. Keep the palm of the hand next to the fingerboard. Review the left-hand playing position on page 69.

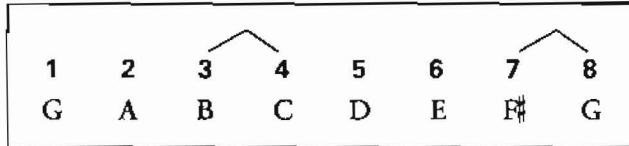


fig. 1

G major scale analysis

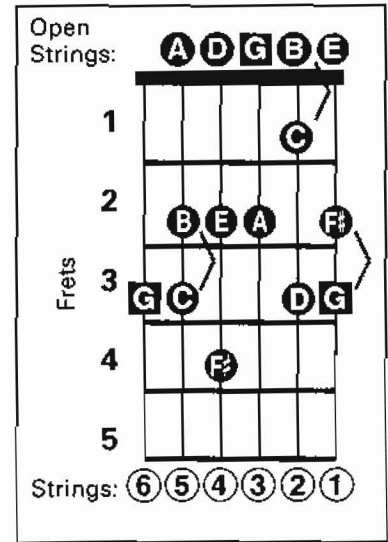


fig. 2

Two-octave G major scale

G Major Scale

half step

5

G Major Scale Study

5

11

Velocity Study

5

9