

WORKSHEET #4

Name _____ Date _____

WRITING and COUNTING MUSIC

A Stem is added to the oval-shaped Half Note and Quarter Note.

For notes located *below* the 3rd line of the staff, the stem is placed on the right side of the note and extends *upward*.



For notes located *on or above* the 3rd line of the staff, the stem is placed on the left side of the note and extends *downward*.



The stem needs to be drawn *straight* up or down from the note. The *length* of the stem should extend to the space or line with the same letter name.

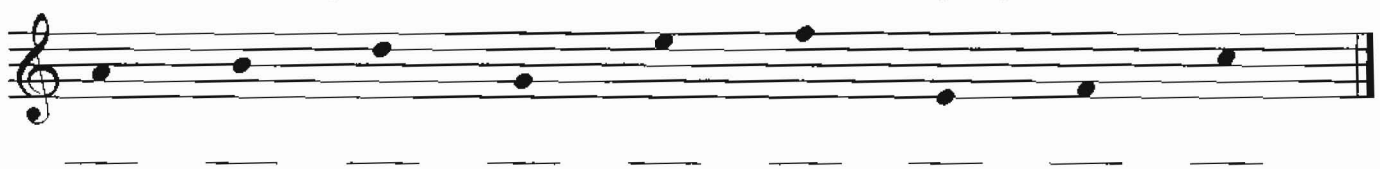


In 4/4 time, a Quarter Note (♩) receives 1 beat, a Half Note (♪) receives 2 beats and a Whole Note (♩) receives 4 beats. The system for counting rhythms in this book is to use a *curved line* to connect numbers when you want to indicate a continuous sound. For example, a half note is held for 2 beats, so connect beat one to beat two using a curved line.

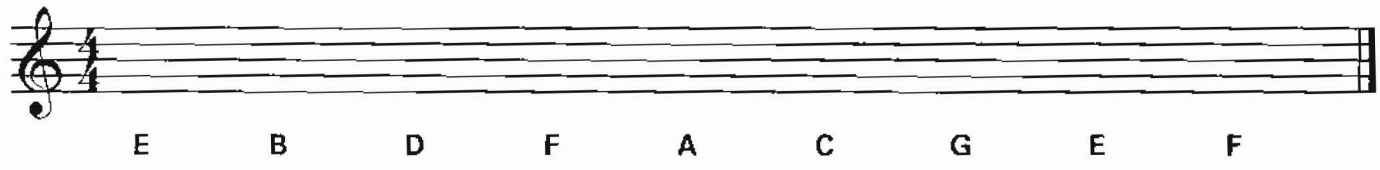


ASSIGNMENT

1. Which direction should the stem go for a 4th space treble clef E? _____
2. Which direction should the stem go for a 2nd line treble clef G? _____
3. Draw stems on the following quarter notes. Write the names of the notes in the space provided.



4. Using half notes, draw the following notes. Do not slant the stems. They need to be drawn straight up and down.



5. In the following exercise, write the counting under the notes. Remember to use a curved line to connect the numbers when counting half and whole notes.

